



*"Space for Life"*



# GARAGES

SINGLE CAR  
MULTIPLE CAR  
TWO-STORY



Multiple Garage Lines...

Various Roof Styles...

Dormer Choices...

Countless Options...



# Space for Life

For three decades, Sheds Unlimited has been helping people create the space they need by designing and building customized single and multiple car garages.

Our design and build process follows eight simple steps:

1. Choose a garage and design that fits your needs
2. Request an estimate for that building with additional options
3. Order drawings, if required by your local municipality
4. Apply for permits through your town
5. Put a deposit on your building
6. Prepare your pad within the given lead time
7. Work with our project manager to coordinate a build/delivery date
8. Enjoy your new Sheds Unlimited garage!

Find your garage in these pages and get started today. One of our salespeople will help you with each step of the process. Within weeks or a few months, you could have a beautiful garage in place and have the *Space for Life* of your dreams.

## Free Garage Plans...



## Built on Site...



# Garages and Two-Story Buildings



**Standard Garages .....4-5**  
 Economy storage solution  
 Smart Panel or vinyl siding  
 Choice of colors



**Classic Garages .....6-7**  
 Aesthetically pleasing  
 Durable construction  
 Wide overhangs



**Premier Garages .....8-11**  
 Eight windows  
 Steep pitch roof  
 Optional dormer



**Two-Story Garages 12-13, 26-29**  
 One Car Modular Garages (14-15)  
 2 and 3 Car Garages (24-25)  
 Add a dormer



**Prefab Garages .....16-25**  
 2, 3 and 4 Car Garages  
 Attic space option - Modular Garages  
 Custom built - On site  
**Colors and Options .....30-31**

# Standard Garages



12x28 Standard Workshop Garage Vinyl

## Standard Garage Features:

- 9'x7' solid garage door
- 3' entrance door
- Two 18"x23" windows with shutters
- Wood floor at 12" on center
- Smart Panel or vinyl siding





**12x28 Saltbox Vinyl**

Heritage Gray - Heritage Gray - Charcoal Gray  
*Optional: 9'x3' ramp, larger windows, 11 lite glass in doors*



**12x24 Workshop Smart Panel**

Light Gray - White - Dual Gray  
*Optional: traditional door, ridge vent, 9'x3' ramp*



**12x24 Workshop Smart Panel**

Clay - Red, White - Weatherwood  
*Optional: traditional door, 9'x3' ramp*



**12x24 MaxiBarn Smart Panel**

Avocado Green - White - Dual Brown  
*Optional: 6' double traditional doors, 9'x3' ramp*

# Classic Garages



12x24 Classic Garage with Smart Panel - optional ramp

## Classic Garage Features:

- 9'x7' garage door with glass
- Two 24"x36" windows with Z shutters
- 3' Classic door
- Wood floor at 12" on center
- 8" overhangs all around
- Smart Panel or vinyl siding





**12x16 Classic Workshop Vinyl**

Custom - White - Black  
 Optional: Homestead garage door with Waterton glass, prehung 9 lite glass



**12x24 Classic Workshop Smart Panel**

Dark Brown - White, Clay - Earthtone Cedar  
 Optional: garage door with Cascade glass, 9'x3' ramp



**12x24 Classic Workshop Vinyl**

White - White, Forest Green - Vintage Green  
 Optional: garage door with Sherwood glass, 6' double doors



**12x20 Classic Workshop Smart Panel**

Light Gray - White, Dark Gray - Weatherwood  
 Optional: garage door with Standard glass 9'x3' ramp

# Premier Garages



## Premier Garage Features:

- 9'x6'6" Homestead door with glass
- 6' classic double doors
- Four 24"x36" windows with shutters
- Four 24" transom windows
- Two classic gable vents and ridge vent
- Wood floor at 12" on center
- Smart Panel, vinyl siding or clapboard







**14x30 Workshop Garage Clapboard**

Clay - White, Black - Black Metal  
 Optional: metal roof, flower boxes, premier dormer



**14x24 Workshop Garage Smart Panel**

Beige - Clay, Red - Weatherwood  
 Optional: garage door with Waterton glass, 9'x3' ramp



**14x24 Workshop Garage Smart Panel**

Beige - Clay, Avocado - Weatherwood  
 Optional: garage door with Cascade LP glass, premier dormer, 9'x3' ramp



**14x30 Workshop Garage Clapboard**

White - White - Dual Gray  
 Optional: garage door with Colonial LP glass, A-frame dormer, custom door 9'x3' ramp

# Premier Garages



14x24 Premier Dutch Barn Garage Smart Panel - classic door with transome, optional 9'x3' ramp





**12x24 Workshop Garage Smart Panel**

White - White, Red - Black Slate

Optional: Garage door with Colonial LP glass, premier dormer, engineered slate roof



**14x24 Workshop Garage Vinyl**

Sandstone - Antique Ivory, Black - Weatherwood

Optional: Garage door with Cascade glass, premier dormer, cupola, weathervane



**12x20 Workshop Garage Clapboard**

Buckskin - Clay - Dual Brown

Optional: garage door with Cascade glass, prehung door, 9'x3' ramp



**12x24 Workshop Garage Vinyl**

Custom Clay - White - Weathered wood

Optional: garage door with Colonial LP glass, 9'x3' Ramp

# Legacy Garages



14x24 Legacy Workshop - optional shed dormer, extra windows, cupola and 9'x3' ramp

## 12'-16' Legacy Garage Features:

- Wooden first floor 12" o/c
- 7'6" ceiling first floor
- Tech-Shield sheathing
- 2"x8" or 2"x10" second floor joist
- 5/8 plywood on second floor
- Corner stairs with landing
- 3' classic door with transom window
- Two 24"x36" slider windows
- 6'6" to first bend in roof for Maxi Barn





**14x24 Workshop Smart Panel**

Chestnut - Black - Weatherwood  
 Optional: 6' and 3' prehung doors with 9 lite glass, shed dormer, no garage door



**14x24 Workshop Vinyl**

Clay - White, Black - Weatherwood  
 Optional: 6' and 3' prehung doors with 9 lite glass, transome windows, shed dormer



**16x24 Workshop Smart Panel**

Beige - White - Dual Brown  
 Optional: vents, prehung door



**14x26 Maxi Barn Smart Panel**

Red - Black - Weatherwood  
 Optional: extra windows, large red cupola, no garage door, 15 lite glass in door

# Modular Garages



24x30 Modular Two Car Garage - Optional Homestead Carriage House garage doors, 9'x3' ramps

## Modular Garage Features:

- 3.5/12 pitch roof
- Two 9'x7' solid garage doors
- 3' door with transom window
- Two 24x27 windows with shutters
- Heavy floor at 12" on center
- 5/8" flooring plywood





**20x40 Workshop Smart Panel**

Custom Colors  
 Optional: garage door with glass, additional garage door, metal roof



**24x48 Workshop Smart Panel**

Light Gray - White - Charcoal Gray  
 Optional: none



**20x20 Workshop Smart Panel**

Buckskin - White - Dual Gray  
 Optional: ridge vent



**20x20 Workshop Vinyl**

Heritage Gray - Royal Brown - Charcoal Gray  
 Optional: 8x7 Homestead garage door, prehung door with 11 lite glass

# Wooden Garages



20x24 Workshop Two Car Garage - Optional 9/12 roof pitch, board & batten siding

## Smart Panel Two Car Features:

- Two 9'x7' solid garage doors
- 3' prehung entrance door solid
- Two 24"x27" windows with shutters
- Painted Smart Panel siding
- Tar paper and hurricane straps
- 30 year architectural shingles
- Built on already prepared concrete pad







**24x28 Workshop Smart Panel**

Light Gray - White - Dual Gray  
*Optional: wooden corners*



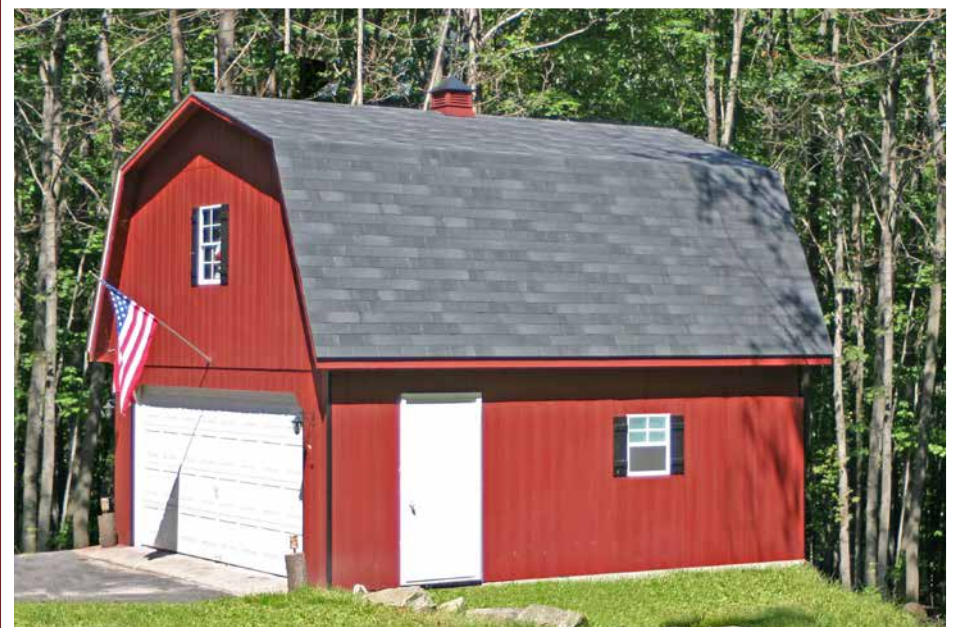
**20x30 Saltbox Smart Panel**

Red - White - Weatherwood  
*Optional: Homestead carriage house garage doors, prehung door with 9 lite glass, cupola*



**20x22 Workshop Garage**

White - White - Weatherwood  
*Optional: garage door with Somerton LP glass, prehung door with 11 lite glass*



**19'9" x 22 MaxiBarn Smart Panel**

Red - Black, White - Black  
*Optional: 16'x7' garage door, red cupola with weathervane*

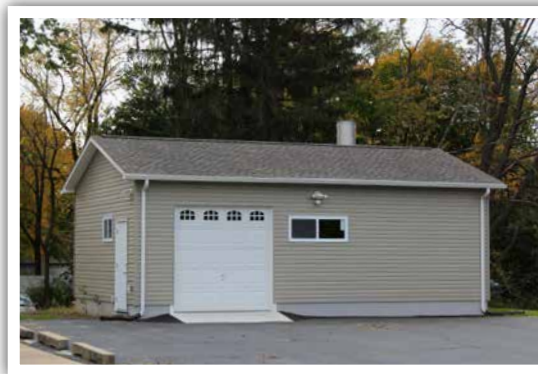
# Vinyl Garages



24x32 Saltbox Two Car Garage Vinyl - Optional glass in 9'x8' garage doors, 4'x8' porch, custom cedar impressions siding

## Vinyl Two Car Features:

- Two 9'x7' solid garage doors
- Solid 3' prehung entrance door
- Two 24"x27" windows with shutters
- Vinyl siding and house wrap
- Tar paper and hurricane straps
- 30 year architectural shingles
- Built on already prepared concrete pad





**24x32 Saltbox Vinyl**

Light Gray - White - Weatherwood

Optional: garage doors with Sunburst glass, 6'x8' porch, custom single door, cupola



**28x28 Workshop Vinyl**

Buckskin - White - Earthtone Cedar

Optional: 6/12 attic truss, ridge vent, 9' walls, cedar impressions siding



**20x25 Workshop Vinyl**

White - White - Dual Brown

Optional: single door with 9 lite glass



**24x28 Workshop Garage Vinyl**

Custom Color - White - Dual Brown

Optional: Higher walls and garage doors, scissors truss, car lift (customer installed)

# Attic Garages



20x40 Workshop Garage Vinyl - 8/12 pitch roof, 16'x7' Homestead door with Cascade glass, 16' shed dormer

## Attic Two Car Features:

- Two 9'x7' solid garage doors
- Solid 3' prehung entrance door
- Two 24x27 windows with shutters
- Smart Panel or vinyl siding
- Attic area in trusses with stairway
- 8/12 pitch roof (up to 12/12 available)
- Tar paper and hurricane straps
- Built on already prepared concrete pad





**24x30 Workshop Garage B&B**

White - White - Charcoal Gray  
 Optional: custom garage doors, lean to with garage door



**20x20 Workshop Vinyl**

Clay - White, Black - Dual Brown  
 Optional: 16'x7' Homestead garage door, extra windows, cupola and weathervane



**24x36 Maxi Barn Garage Smart Panel**

Custom - Custom Red - Earthtone Cedar  
 Optional: Homestead garage doors with Cascade LP glass, a-frame dormers



**24x40 Workshop Garage Smart Panel**

Red - Red - Black  
 Optional: Homestead garage doors, solid double entrance doors



24x50 Workshop Attic Garage with four SRP garage doors, custom siding





**28x32 Workshop Smart Panel**

Buckskin - White, Brown - Weatherwood  
 Optional: classic garage doors with Cascade glass, a-frame dormers



**20x24 Workshop Smart Panel**

Custom - White - Weatherwood  
 Optional: 16'x7' Homestead garage door, transom windows, extra windows



**Corner Stairway**



**20x20 Workshop Vinyl**

Clay - White - Dark Brown Metal  
 Optional: 12/12 attic truss, metal roof, snow guard, 24" cupola

# Three Car Garages



24x30 Workshop with Board and Batten siding - optional 12/12 attic roof, extra windows, cupola

## Attic Three Car Features:

- Three 9'x7' solid garage doors
- Solid 3' prehung entrance door
- Two 24x27 windows with shutters
- Smart Panel or vinyl siding
- Attic area in trusses with stairway
- 8/12 pitch roof (up to 12/12 available)
- Tar paper and hurricane straps
- Built on already prepared concrete pad







**28x36 Hip Roof Workshop**

Customer Finished Interior and Exterior  
Optional: 12' walls, 8/12 pitch roof - custom shingles - 2' overhangs



**Interior of 28x36 Hip Roof Garage**

Car Lift and Interior work completed by Customer.



**24x34 Workshop Vinyl**

White - White - Black  
Optional: Homestead garage doors, 9/12 pitch roof, cupola, ridge vent



**28x40 Saltbox Garage Smart Panel**

Red - White - Vintage Green  
Optional: prehung door with 9 lite glass, 30" wooden cupola, weathervane

# Legacy Two Story



24x36 Legacy Workshop Garage - Optional shed dormer, extra windows, Lancaster garage doors and more

## Legacy Two Car Features:

- 2x6 framing - 8' ceiling first floor
- 12/12 pitch roof with full second floor
- Engineered 2nd floor system
- Engineered rafter system
- Two sunburst garage doors
- 3' prehung door with 9 lite glass
- Two 24x36 windows with shutters





**24x28 Workshop Garage B&B**

Dark Brown - Dark Brown - Weatherwood  
 Optional: extra windows, higher walls, built on knee wall



**24x36 Workshop Garage Clapboard**

Custom Paint - White - Custom Silver  
 Optional: garage doors with Somerton LP glass, James Hardie siding, metal roof



**24x36 Workshop Garage B&B**

Black - Black - Black  
 Optional: metal roof, Homestead garage doors with Cascade LP glass



**24x34 Workshop Garage Smart Panel**

White - White - Dual Black  
 Optional: Homestead garage doors with Cascade LP glass

# Legacy Two Story



24x28 Legacy Two Story Garage - James Hardie siding, standing seam metal roof, a-frame dormers





**30x50 Workshop Garage Clapboard**

Hunter Green - Hunter Green - Earthtone Cedar  
 Optional: two a-frame dormers, shed dormer, Avalon garage doors, cupola



**21x30 Workshop Garage Vinyl**

Custom Vinyl - White - Dual Black  
 Optional: garage doors with Colonial glass, shed dormer, prehung doors with 15 lite glass



**24x28 Workshop Garage Vinyl**

Custom - White - Weatherwood  
 Optional: shed dormers, custom vertical siding



**20x22 Workshop Garage Vinyl**

White - White - Dual Gray  
 Optional: 10' a-frame dormer, thermopane windows

## Vinyl Siding



## Metal Trim



## Smart Panel and Trim Paint Colors



## Shingle Colors



## Vinyl Shutters



## Corrugated Metal Colors



## Standing Seam Metal Colors



Colors shown may not represent the exact shade.

## Siding Choices



# Roof Designs



Slider Window  
Vinyl Shutters



Octogan Window



Transom Windows



Cupola Options



Weather vanes in many styles



Window w/Trim and Z Shutters



Special Order Window with Round Top Glass



Gable Vents



Classic Vents



Vinyl



Wooden



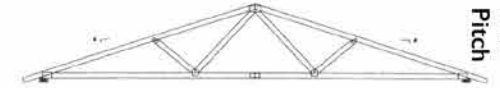
Roll Ridge Vent



Vinyl Flower Boxes



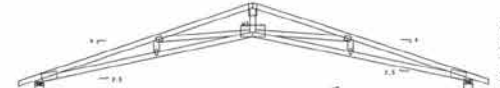
Ramps



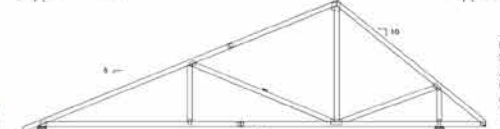
4/12 Pitch



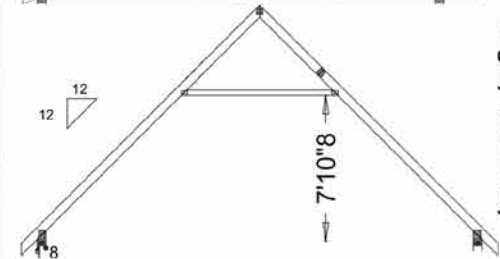
10/12 Pitch Attic



Scissors



Saltbox



Legacy Two Story

Many Other Designs Available



Shed Dormer



Eyebrow



A-Frame



Porch with Railing



Metal Roof with Snow Guards



Sanding Seam



Traditional Colonial Standard Doors Classic Doors Transom Roundtop Raised Panel Solid RP 11 Lite 9 Lite 11 Lite Double Prehung 9 Lite Double 15 Lite Double



9x7 SRP



SRP Colonial SP Glass



SRP Sunburst



Advantage Classic Cascade LP Glass



Homestead CH Somerton LP Glass



Advantage Classic Stockton LP Glass



Single Car Garages

Wooden and Vinyl Garages

Premier Garages

Two and Three Car Garages

Attic Garages

Legacy Two-Story Buildings



2025 Valley Road  
Morgantown, PA 15443  
717-442-3281  
[www.shedsunlimited.net](http://www.shedsunlimited.net)